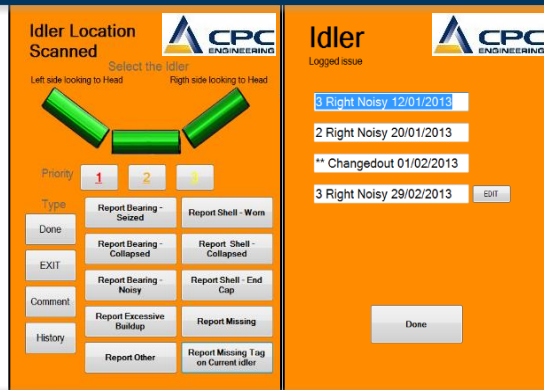


# Maintenance Management

## Data Driven Solutions



CPC can offer with its own internal people a review of your Maintenance Management Plan and recommend changes.

It can also offer its own electronic Maintenance system to manage your assets based on PM,s. CPC knows that the PM's for any company is the foundation for availability and asset health. "ASTRAC"

The system can be adapted for both fixed and fleet and importantly by using real time data and RFID tags for fixed plant people are no longer able to just tick and flick.

ASTRAC delivers the following benefits:

- Real time monitoring and reporting of equipment status and operator behaviour.
- Real time event management and notifications.
- Eliminates hand written reports and lost or damaged service documents.
- Full tracking and accountability of operators and service personnel through user logins and RFID access.
- Provides accurate replacement schedules reducing equipment downtime and spare parts inventory.
- Reduces overall equipment operating and maintenance costs.

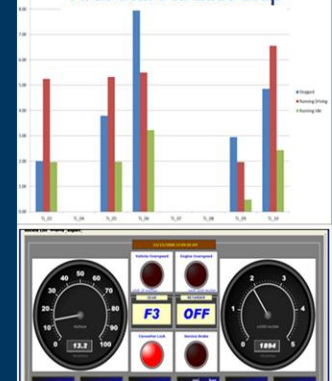
## CPC ENGINEERING

A reputation built over 45 years of expertise and integrity, delivering engineering, construction and maintenance services to the minerals resource sector.

CPC's success is driven by a commitment from our people to add value in everything we do.

CPC employs over 300 personnel in Australia and overseas.

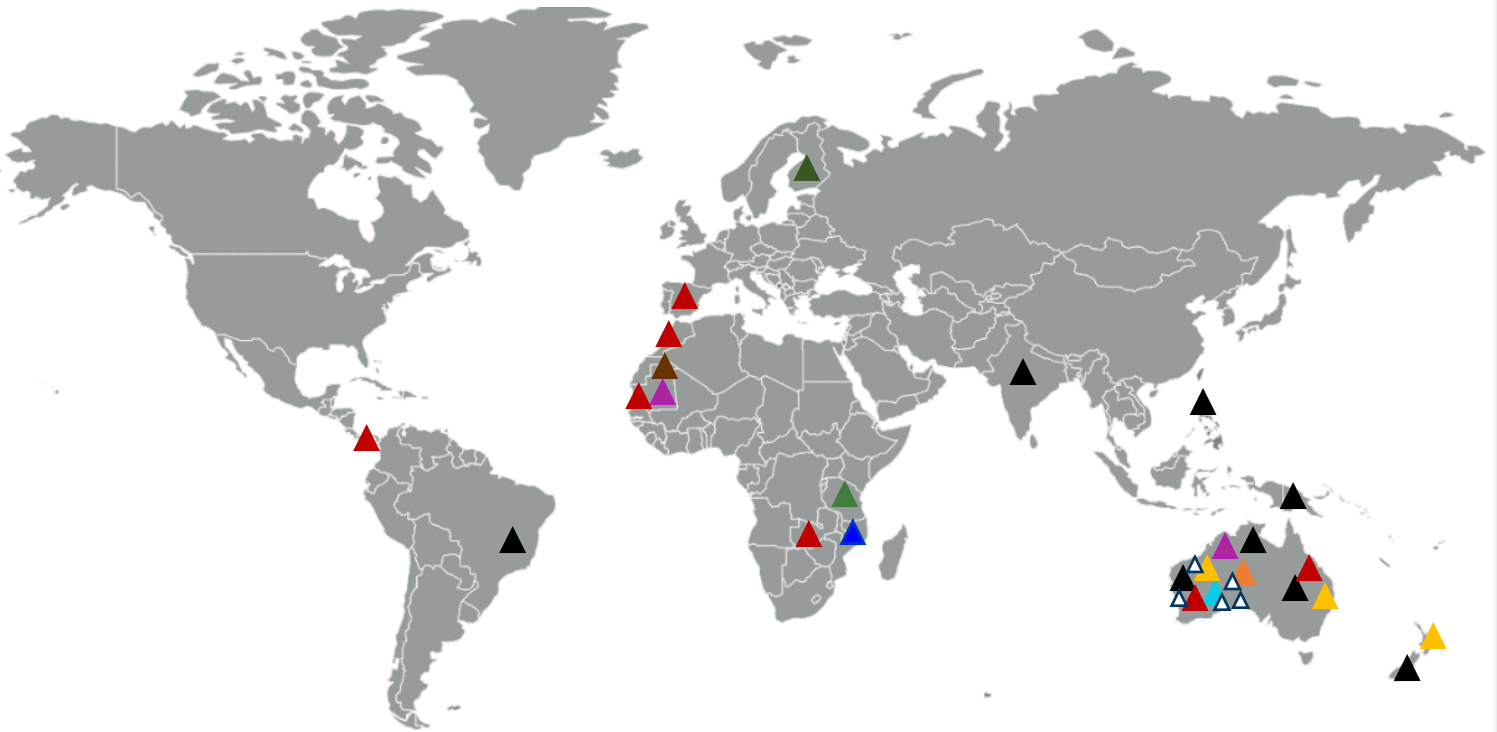
### First start to Last Stop



Safety  
Approved  
AS/NZS 4801

Quality  
Approved  
ISO 9001

CPC Engineering is committed to taking appropriate measures to protect the safety, health and welfare of its employees, customers, contractors, visitors and the community.



- ▲ Base Metals  
Copper  
Lead  
Nickel  
Zinc
- ▲ Precious Metals  
Gold  
Silver
- ▲ Transition Metals  
Scandium  
Tungsten
- ▲ Iron Ore
- ▲ Graphite

- ▲ Tin
- ▲ Water treatment
- ▲ Mineral Sands
- ▲ Lithium
- ▲ Chromite
- ▲ CPC Location

**Headquarters - PERTH**

Ph: +61 8 9365 0300  
E: CPCprojects@cpceing.com.au

**PORT HEDLAND**

Ph: +61 8 9172 9200  
E: CPCporthedland@cpceing.com.au

**KALGOORLIE**

Ph: +61 8 9025 1100  
E: CPCkalgoorlie@cpceing.com.au

**RAVENSTHORPE**

Ph: +61 8 9838 1555  
E: CPCravensthorpe@cpceing.com.au

**KAMBALDA**

Ph: +61 8 9027 8000  
E: CPCkambalda@cpceing.com.au

**ESPERANCE**

Ph: +61 8 9071 1877  
E: CPCravensthorpe@cpceing.com.au